

NEW

TRIANO 2nd Generation

LED High Bay Series 3401/3402... G2

Application:

Production areas and warehouses, maintenance and assembly shops, cool storage facilities, walkways in rack areas, hardware stores etc.

Design:

LED-housing: Robust three-part cast aluminium housing with cooling fins, LED-modules and flat safety glasses (IK09).

ECG-housing 3401 ...: Cast aluminium

ECG-housing 3402...: Extruded aluminium with cooling fins. All case parts powder coated in DB702N (mica-iron).

Connection: Preinstalled 3-pole (DIMD 5-pole) plug-type connector, plug mounted to the housing, socket included.

Mounting: 1-point suspension, eyelet included.



Technical Data:

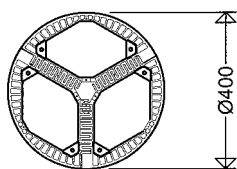
LED: Highpower-LED 5,000K, CRI > 80, symmetrical wide beam life cycle L₈₀ = 80.000h at max. ambient temperature (see notes).

ECG: 220-240V, 50-60Hz. Due to the inrush current of the electronic ballasts, the maximum permissible number of light fittings per circuit breaker is limited. Overvoltage protection, excess temperature protection-, overload and short circuit protection.

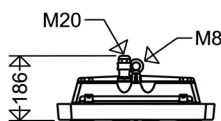
Ambient temperature: -20°C up to see article table

Options:

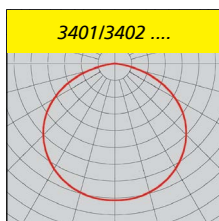
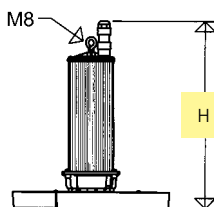
- light output reduction (LR) per 230V control line (dimnable)
- uniform luminous flux option (CL) to keep the light output on same level for the whole life cycle
- for connection to group or central battery systems (ZB)
- narrow-wide beam optics (TB)
- narrow beam optics (T)
- PC cover for applications in food industry areas (IFS)
- ▽-sign for locations with increased fire risk (D)
- silicone free
- without plug-type connector



3401 L... G2



3402 L... G2



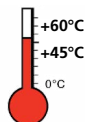
SCHUCH Quality - your advantage:

- fast and easy mounting and commissioning due to 1-point suspension and plug-in connection (Plug & Play)
- optimized thermal management due to segmentation of the LED modules and direct mounting to the housing, intelligently arranged cooling system, huge heat sink, excellent heat dissipation,
- high expectancy of system life even at maximum permissible ambient temperatures (see Technical Supplement and article table)
- highest efficiency with light output up to 151/lm/W
- colour reproduction Ra > 80, according to the workplace guide lines suitable for nearly all plant locations
- uniform illumination due to the „Multi-Layer Technology“ i.e. every individual LED illuminates the whole surface, the light curves of the individual LED are overlapping.

Series	H [mm]
3402 L180 DIMD	590
3402 L250	510
3402 L250 DIMD	510

Article no.	Type	Power consumption [W] *	Luminous flux [lm] *	Light output [lm/W]	Ta max. [°C]	Energy efficiency class	Substitute for **	Weight [kg] (without packing material)
34010 0100	3401 L120 G2	84	12.540	149	55	A++	HME250	6,3
34010 0101	3401 L180 G2	123	18.550	151	50	A++	HIT250/HME400/HIE 400 (HI-VG)	6,3
34010 0400	3402 L250 G2	198	26.460	134	45	A++	HIE400 (HS-VG)/HIT400	8,1
34010 0102	3401 L120 G2 DIMD	85	12.540	148	55	A++	HME250	6,3
34010 0401	3402 L180 G2 DIMD	124	18.550	150	60	A++	HIT250/HME400/HIE 400 (HI-VG)	8,2
34010 0402	3402 L250 G2 DIMD	200	26.460	132	45	A++	HIE400 (HS-VG)/HIT400	8,1

3401/3402... G2



Notes:

Properties, limitations and details for controlling LED-light fittings: See „Technical Supplement“.

All technical data is relevant at the time of print. Actual technical data can be found in the internet under www.schuch.de.

* see notes

** The given information is for rough orientation only. In each individual case a lighting calculation is necessary. (VG = ballast)



Accessories / Spare Parts

Type	Article no.	
34011 9001	3401/010	spare safety glass, for BR 3401/3402...
34011 9002	3401/010 IFS	spare safety glass, for BR 3401/3402... IFS